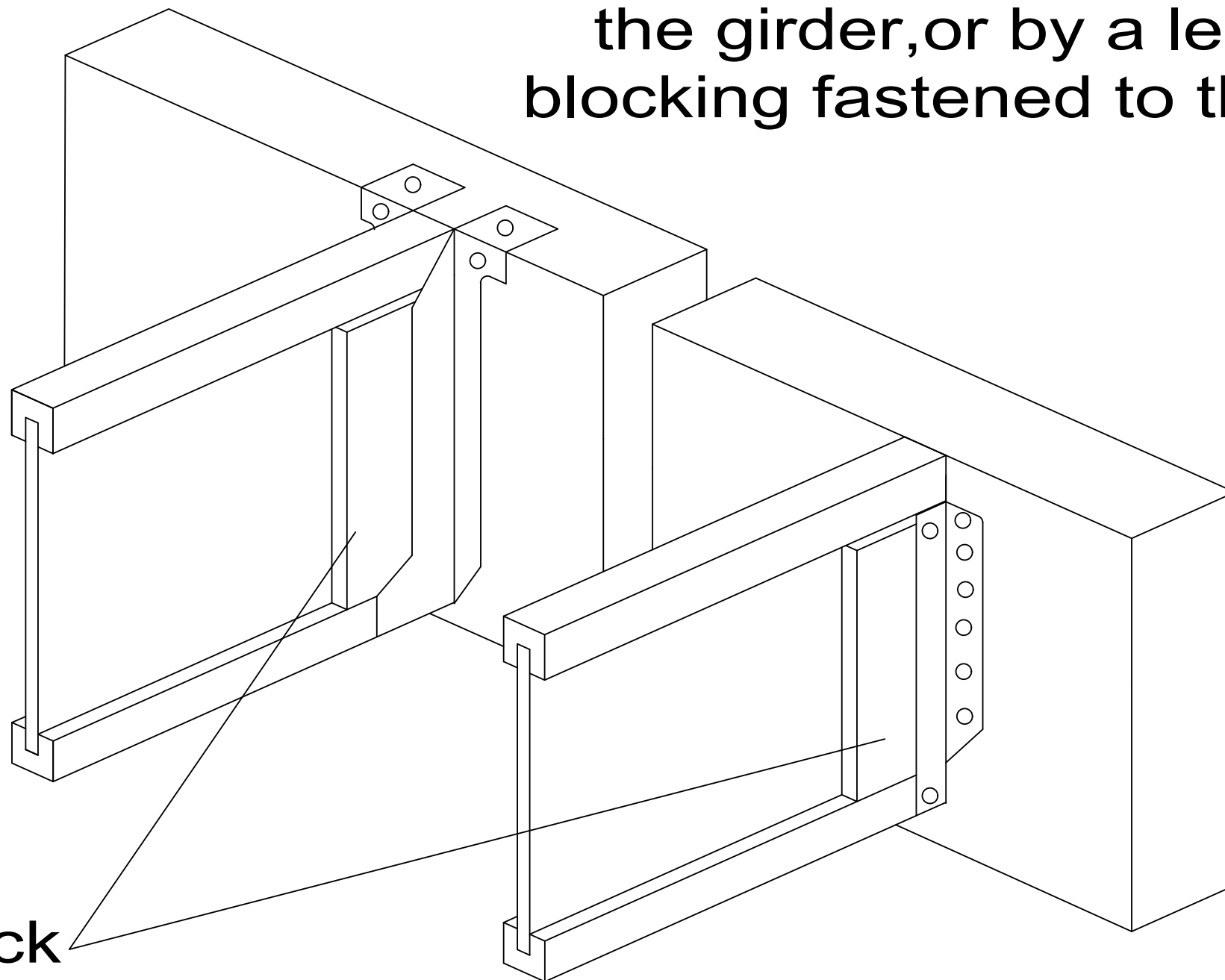


E2

Hanger Detail

Applied loads at end of I-joist must be supported directly by the girder, or by a ledger or blocking fastened to the girder.



Be sure to check web filler requirements for hangers

Verify capacity and fastening requirements of hangers and connectors

Use of flat bearings or non-sloped hangers with sloped members is acceptable provided that the member pitch is less than or equal to 1/2" rise for 12" of run (0.5:12) or 2.39° degrees. Hanger design is the responsibility of the designer.